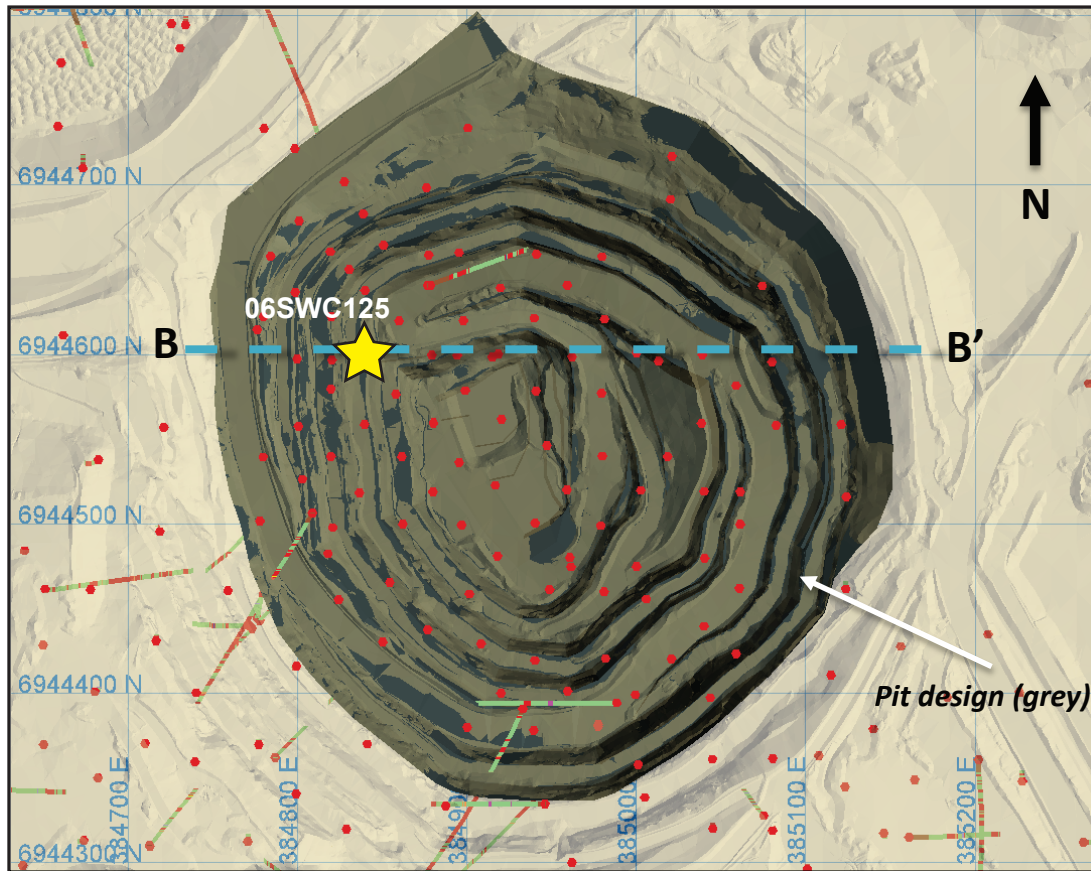
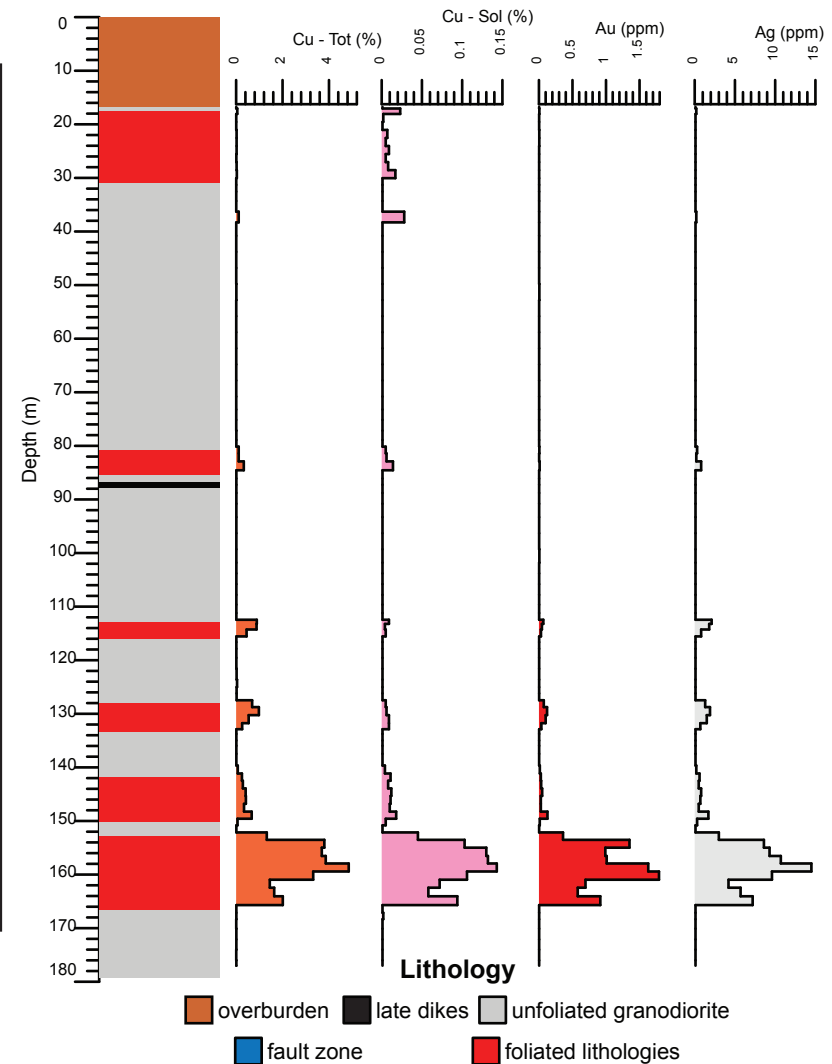


**Minto deposit (Yukon MINFILE 115I 021, 022)**  
**Drill Hole: 06SWC125, Minto South deposit (Area 2 pit)**

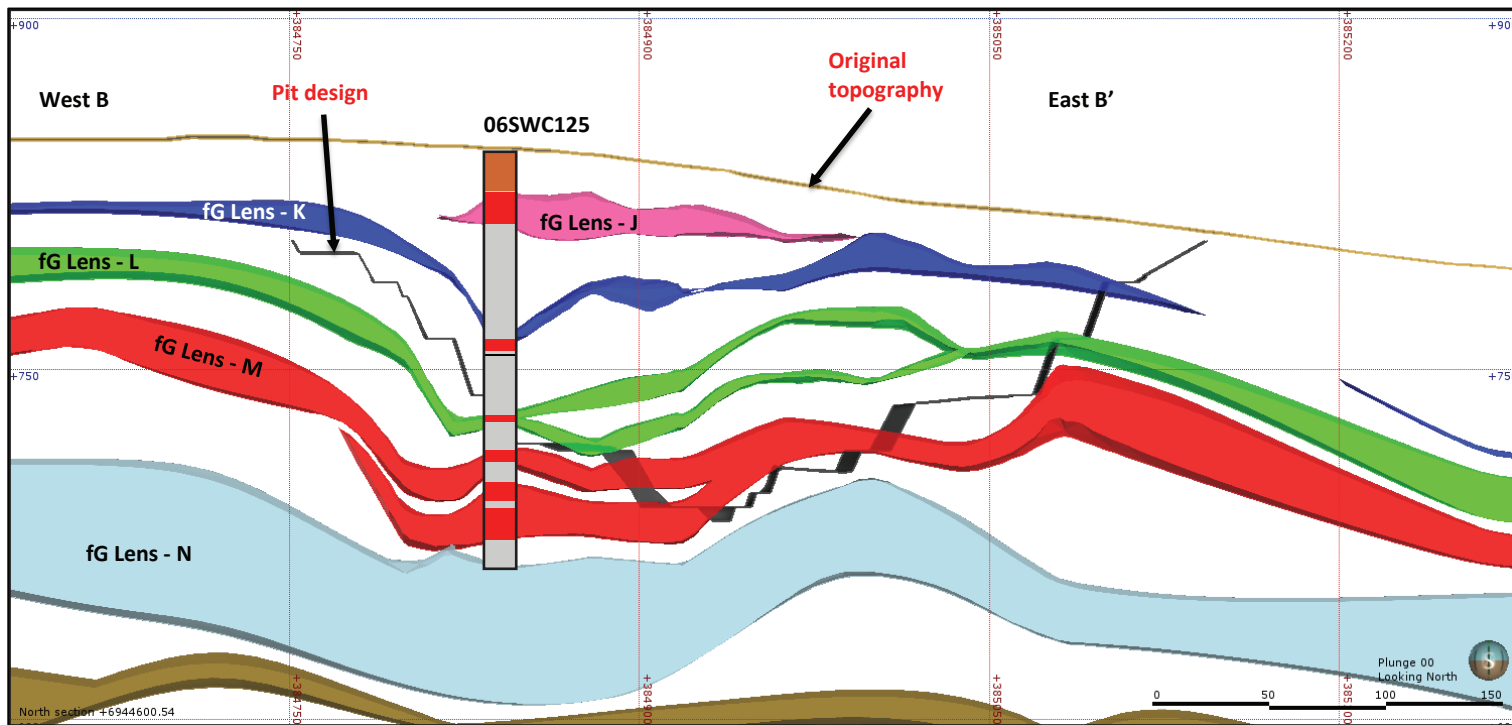
Area	Hole No.	Azimuth	Dip	Length (m)	Collar coordinates (NAD83, Zn 8)
Area 2 (South Minto)	06SWC125	0	-90	179.22	384840mE, 6944601mN



Above: Orthophoto of Area 2 pit (Minto South deposit). Collar location of 06SWC125 shown by yellow star, red circles show collar locations of other drill holes.



Right: Right: Simplified strip log with select assay plotted downhole.



Above: Simplified vertical east-west cross-section through the Area 2 pit (Minto South deposit).

Right: Selected assays through the M lens of Area 2 pit (Minto South deposit). Cu = sulphide and non-sulphide copper, Cu-Sol = non-sulphide copper

Hole	From (m)	To (m)	Interval (m)	Sample	Cu (%)	Cu-Sol (%)	Au (ppm)	Ag (ppm)
06SWC125	147.5	149	1.5	B797615	0.34	0.01	0.028	0.5
06SWC125	149	150.16	1.16	B797616	0.67	0.018	0.127	1.7
06SWC125	150.16	151.46	1.3	B797617	0.06	0.005	0.012	0.3
06SWC125	151.46	152.81	1.35	B797618	0.01	0.001	0.003	0.1
06SWC125	152.81	154.23	1.42	B797619	1.32	0.045	0.359	3
06SWC125	154.23	155.73	1.5	B797620	3.8	0.103	1.35	8.6
06SWC125	155.73	157.33	1.6	B797622	3.69	0.13	0.99	9.3
06SWC125	157.33	158.53	1.2	B797623	3.86	0.132	1.01	10.7
06SWC125	158.53	160.32	1.79	B797624	4.85	0.143	1.63	14.5
06SWC125	160.32	161.6	1.28	B797625	3.32	0.106	1.79	9.6
06SWC125	161.6	163.3	1.7	B797626	1.45	0.072	0.694	4.2
06SWC125	163.3	164.8	1.5	B797627	1.64	0.058	0.578	5.7
06SWC125	164.8	166.59	1.79	B797628	2.01	0.094	0.915	7.2
06SWC125	166.59	167.66	1.07	B797630	0.01	0.001	0.003	0.1
06SWC125	167.66	169	1.34	B797631	0.01	0.002	0.003	0.1
06SWC125	169	171.2	2.2	B797632	0.005	0.001	0.003	0.1
06SWC125	171.2	173	1.8	B797633	0.01	0.001	0.003	0.1
06SWC125	173	175	2	B797635	0.01	0.001	0.003	0.1
06SWC125	175	177	2	B797636	0.005	0.001	0.003	0.1
06SWC125	177	179.22	2.22	B797637	0.01	0.001	0.003	0.1